



INTERFAITH
ALLIANCE
FOR SAFER COMMUNITIES

A guide
for faith leaders

The Faith-AI Covenant

I. Introduction

The emergence of Artificial Intelligence represents a significant shift in how human beings interact, learn, and find meaning. As leaders of faith communities, your leadership in this moment is essential to ensure that technological progress remains anchored in human dignity and moral values. Current AI governance is often constrained by a reactive posture of “*We will fix harm once it appears*”. Through the leadership and wisdom of the world’s religious traditions, we seek to transition to a more responsible, human-centric philosophy: “*Some harms must never be allowed to emerge.*”

The Faith-AI Covenant is a multi-faith multi-stakeholder framework designed to establish moral guardrails for artificial intelligence across societies.

This guide provides the necessary context to help you navigate the complexities of AI and engage effectively with those developing and deploying AI systems.

Your contribution to this Covenant is foundational. By defining the essence of human dignity, you provide the baseline against which all technological impact must be measured. You are uniquely positioned to identify moral boundaries, ensuring safety is preemptive rather than reactive. Your leadership introduces long-term ethical reasoning that transcends market incentives to prioritize the human spirit. Finally, as stewards of communal trust, your guidance ensures that technology is integrated transparently, inclusively, and safely for all.



INTERFAITH
ALLIANCE
FOR SAFER COMMUNITIES



II. The Evolution and Global Reach of AI

AI is no longer a futuristic concept; it is a global reality. With the emergence of large language models (LLMs), we have rapidly transitioned from Symbolic AI (rules-based) to Generative AI (intuition-based), creating tools designed to process and generate outputs based on human language, culture, and belief.

As of early 2026, AI technology has reached record levels of adoption, though its impact varies significantly across regions and cultures. With billions of people interacting with AI tools and algorithms, the role of faith leaders in providing an ethical and moral compass for these interactions becomes a critical safeguard for human dignity and community trust. These trends highlight both the scale of opportunity and the urgency of ethical oversight.

WIDESPREAD USAGE



1 in 6 people worldwide are now active users of generative AI tools.

(Microsoft AI Diffusion Report, Jan 2026)

EMOTIONAL DEPENDENCY



1 in 3 children who use AI chatbots now view them as "friends" rather than tools.

(Vodafone Safer Internet Day Research, 2026)

SAFETY SURGE

13X

AI-facilitated child sexual abuse cases have seen a huge increase, with US-reported cases jumping 1,325% between 2023 and 2024.

(Childlight Global Child Safety Institute, 2025)

DIGITAL DIVIDE



A significant gap exists between the Global North (**24.7%**) and the Global South (**14.1%**) on the adoption of AI.

(Microsoft AI Diffusion Report, Jan 2026)



III. Demystifying AI: How does it work?

As AI systems move closer to the formation of meaning, the task is not only to mitigate misuse; it is to anticipate— and design against—foreseeable harms, particularly those affecting children, conscience, and spiritual authority.



Large Language Models

LLMs are trained on vast amounts of information which allows them to identify relationships between words, images, or data points. When asked a question, LLMs can then predict the most likely next word in a sentence based on previously identified patterns.

Machine Learning

This is the core technology where the system improves its performance by analyzing more data, rather than being explicitly programmed for every scenario.

Generative AI

These are the most commonly used AI tools that can generate new content in response to user prompts, such as text, images, music, or code.

Algorithmic Bias

When an AI produces unfair or skewed results because the data it was trained on was biased.

Hallucinations

When an AI produces unfair or skewed results because the data it was trained on was biased.

IV. The Role of Faith Leaders in the AI Era

You do not need to be a computer scientist to have a seat at the table. Your expertise lies in the "human" element of technology.

The Moral Compass

You define the ethical benchmarks that code alone cannot replicate. Your role is to remind the technical world that "innovation" is only progress if it serves human flourishing.

The Cultural Translator

You help bridge the gap between technical logic and the lived reality of diverse communities. You can identify when a system's "logic" conflicts with the core values of your community.

The Voice of the Vulnerable

Technology companies often prioritize for scale and majority use. You represent the marginalized and the vulnerable, ensuring their safety and dignity are prioritized in AI design.

The Guardian of Truth

By engaging with AI developers, you help ensure that the digital representation of your faith's history, texts, and values is accurate and aligned with the values and traditions your community.



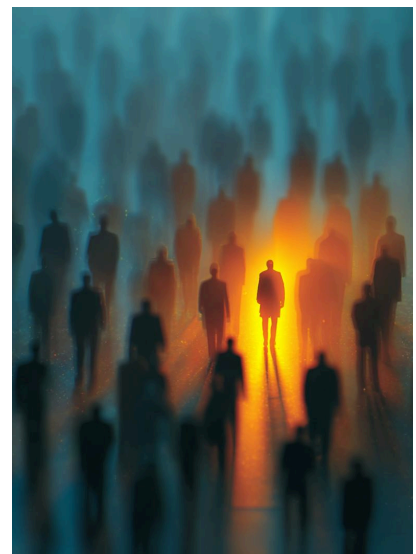
V. Faith Leader's Contributions to the Covenant

You, as leaders of diverse religious communities, are essential partners in the governance of AI, ensuring that technological progress remains grounded in the sanctity of human dignity. Your participation transforms the initiative from a technical dialogue into a shared civilizational commitment.



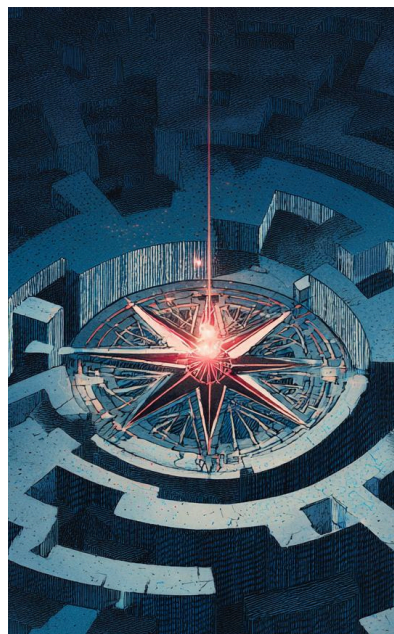
Advancing AI Safety and Ethical Guardrails

Strengthen ethical oversight in AI development and deployment by advocating a proactive “safety-first” philosophy. Centered on the principle that “some harms must never be allowed to emerge,” your involvement provides a moral framework that extends beyond technical compliance. By defining boundaries for dignity, agency, and truth, you help identify moral risks overlooked by metrics. Your authority establishes the red lines that help ensure that AI systems remains a force for common good.



Bringing Regional Challenges and Perspectives to the Working Draft

You can serve as the vital link between global innovation and the needs of your communities. Your role involves identifying regional challenges and perspectives that must be integrated into the Covenant. By sharing insights from your unique cultural and spiritual contexts, you can ensure the Covenant addresses the real-world implications of AI on our communities.



Developing Commitments and Pledges

Throughout the initiative, you can work to find common ground on sensitive “Algoethics” issues. Beyond providing feedback on the draft, you can help formulate the concrete commitments that religious institutions will adopt, such as establishing repositories of truth or promoting ethical usage guidelines within your communities. These pledges ensure that the Covenant functions as a practical roadmap for moral progress.

VI. Preparing for the Regional Roundtables

The upcoming roundtables are collaborative spaces. Here is how to participate most effectively:

Prepare Your Perspective

Before attending, consider: *“What are the aspects of my community’s daily life that I am most concerned about regarding artificial intelligence?”* Bringing specific, real-world examples is more impactful than abstract concerns.

Focus on Human Impact

When discussing a technical feature, always ask:

"How does this affect the dignity of the individual?"

"Who might be left behind or harmed by this specific tool?"

"Does this support or undermine the trust within my community?"

Engaging with AI Companies

Technology executives and engineers are often looking for practical, actionable insights. To make your engagement impactful:

Don't be deterred by technical jargon: If a technical term is unclear, ask for a "human-centric" explanation. Your request for clarity may reveal hidden ethical complexities.

Speak from community trust: Remind them that their products are used within the social fabric of your community. Companies value your insight because you hold the trust of the people they serve.

Focus on common ground: Instead of seeking technical "guarantees," focus on establishing shared commitments for transparency and responsibility.

VII. Key Resources

To help you prepare for our upcoming roundtable, we have selected three key resources that connect moral values with the technical and corporate realities of AI.

These readings are recommended but optional; please explore them if your time permits to deepen your perspective before we enter the room.



UNESCO Ethics of Artificial Intelligence

This global framework, adopted by 193 nations, **provides a human-centric approach to AI**. It aligns with religious values like dignity and justice, offering a shared international language for ethical advocacy and stewardship.

The Rome Call for AI Ethics

A landmark interfaith document promoting "Algoethics" —**integrating ethics into AI design**. It serves as a model for how faith traditions can collaborate with tech companies to ensure innovation remains human-centered and safe.

McKinsey: State of AI Trust in 2026

This report explores **the shift toward autonomous "Agentic AI" and the widening trust gap**. It helps readers understand corporate pressures and technical risks, enabling more practical and effective ethical guidance during roundtables.

In addition to these readings, we encourage you to explore your own faith tradition's specific perspectives on artificial intelligence and ethics. Bringing your denomination's unique theological insights will greatly enrich our collective dialogue.

About the Interfaith Alliance for Safer Communities

The IAFSC was established to empower faith leaders to work for the safety and security of our communities, tackling issues such as child sexual abuse, extremism, displacement and trafficking. We aim to facilitate the building of bridges between key stakeholders including faith communities, NGOs and experts in various domains. We are conscious of the importance of empowering faith leaders, both at the institutional and grass-root levels, with knowledge, and to mobilize them to play a more active role in community safety.



**INTERFAITH
ALLIANCE**
FOR SAFER COMMUNITIES

To learn more about us, visit our website (www.iafsc.org)
or contact us by email (info@iafsc.org)